

CERTIFICATE OF LOCATION OF GOVERNMENT CORNER

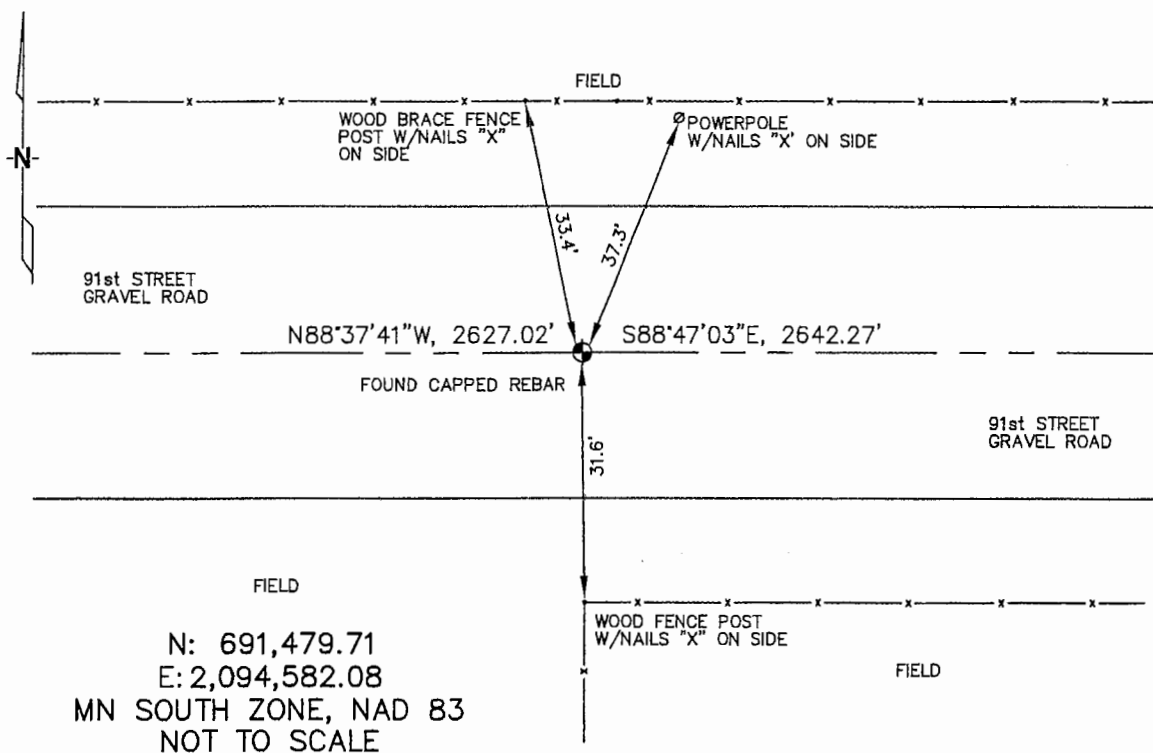
SOUTH 1/4 Corner of Section 16, Township 106, Range 43, 5th P.M.

STATE OF MINNESOTA, County of MURRAY

At the corner location shown on the sketch :

- On 3/22/2006 found REBAR WITH UNREADABLE CAP, OPPOSITE
FENCE CORNER WITH FENCE LINES RUNNING SOUTH & EAST.
 left monument as found, lowered monument, removed monument (explain)
- On _____ set _____

Sketch of reference ties



Statement of evidence relative to this corner location is on back page

I hereby certify that this document and the data contained herein was prepared by me or under my direct supervision.

James V. Johnson 4/24/06
 Signature Date
 Registration No. 44583

- Land Surveyor, Professional Engineer
 County Surveyor, County Engineer

OFFICE OF THE COUNTY RECORDER

County of _____

SEP 28 2006

I hereby certify that this document was filed in the Co. Recorders office at _____ .M. on the day of _____ A.D., 20

County Recorder James V. Johnson
 By _____, Deputy

DOCUMENT NO. _____

STATEMENT OF EVIDENCE:

SOUTH 1/4 CORNER, SECTION 16, T. 186 N., R. 43 W.,
MURRAY COUNTY, MINNESOTA

1866

J. W. BISHOP, US. DEPUTY SURVEYOR, MONUMENTED CORNER.

3/22/2006

UNTEIG ENGINEERS, INC. SURVEY CREW, BRIAN PAYNE
PARTY CHIEF FOUND A REBAR WITH AN UNREADABLE
CAP, IN GRAVEL ROAD, OPPOSITE FENCE LINE GOING
SOUTH.

TIES: NW - 33.4' TO WOOD BRACE POST IN FENCE
LINE WITH NAILED "X" ON POST.

NE - 37.3' TO POWER POLE WITH NAIL "X"
ON POLE/SIDE.

S - 31.6' TO WOOD, FENCE CORNER POST, WITH
NAILED - "X" ON SIDE.

E - 2642.27' TO SE CORNER, SEC 16.

W - 2627.02' TO SW CORNER, SEC 16.